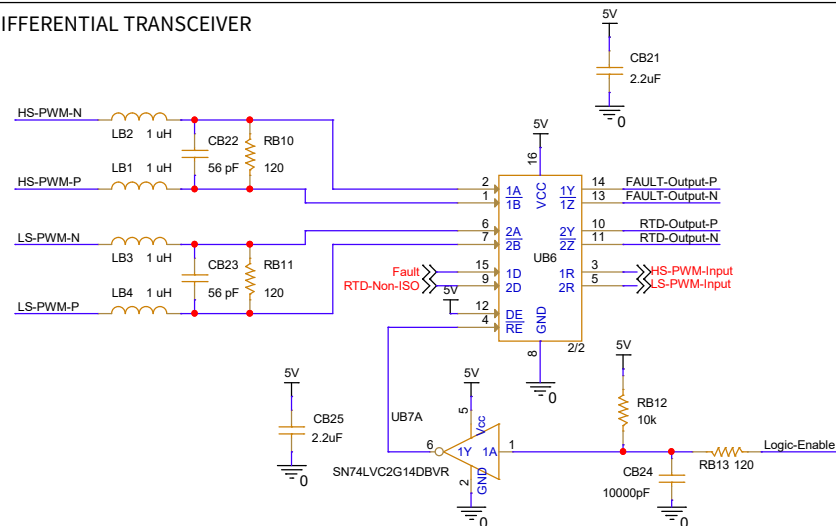
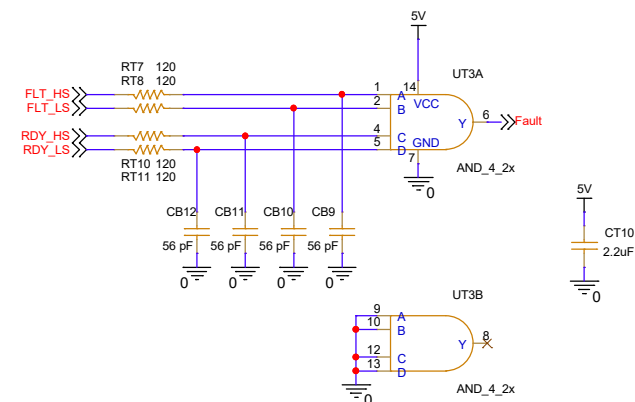


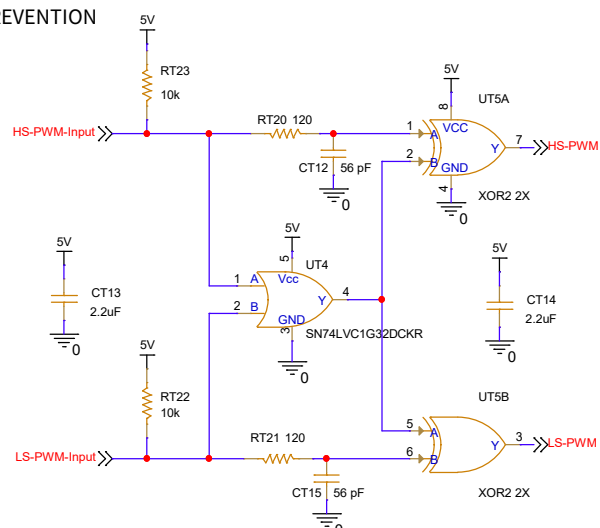
DIFFERENTIAL TRANSCEIVER



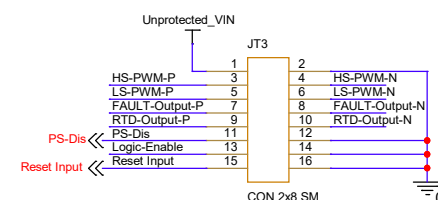
FAULT COMBINATION



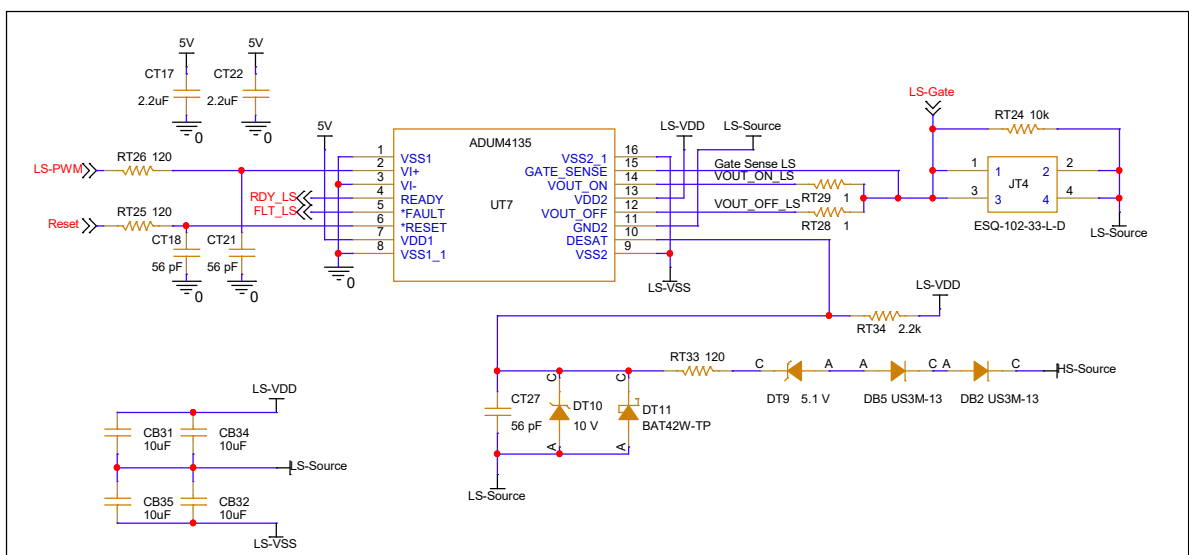
SHOOT-THROUGH PREVENTION



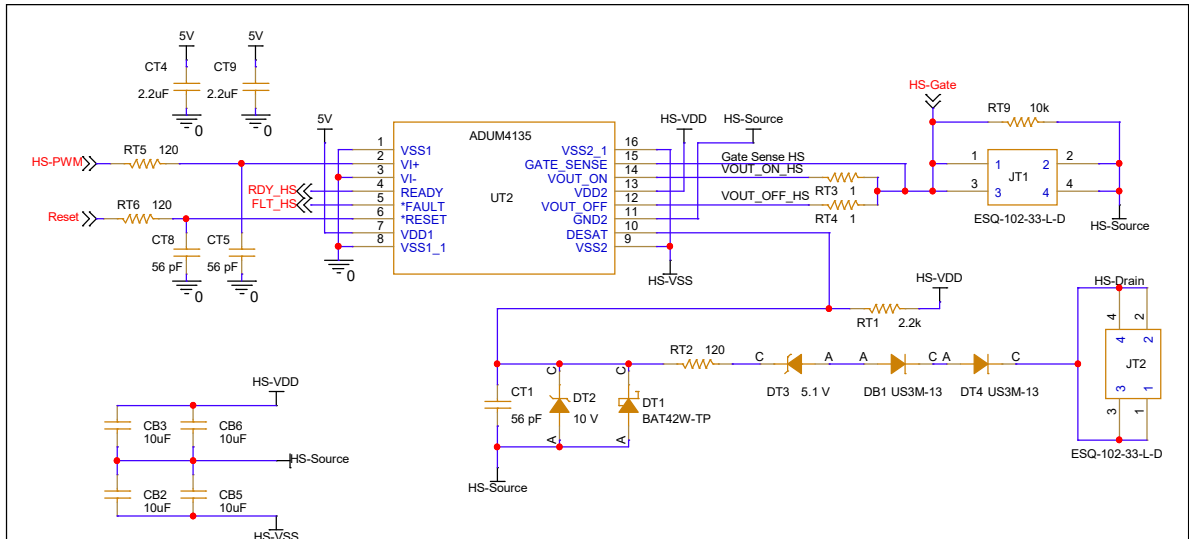
I/O



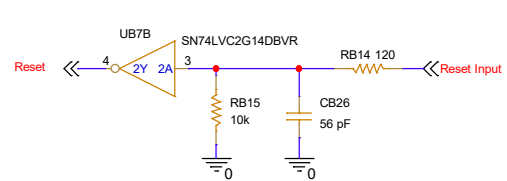
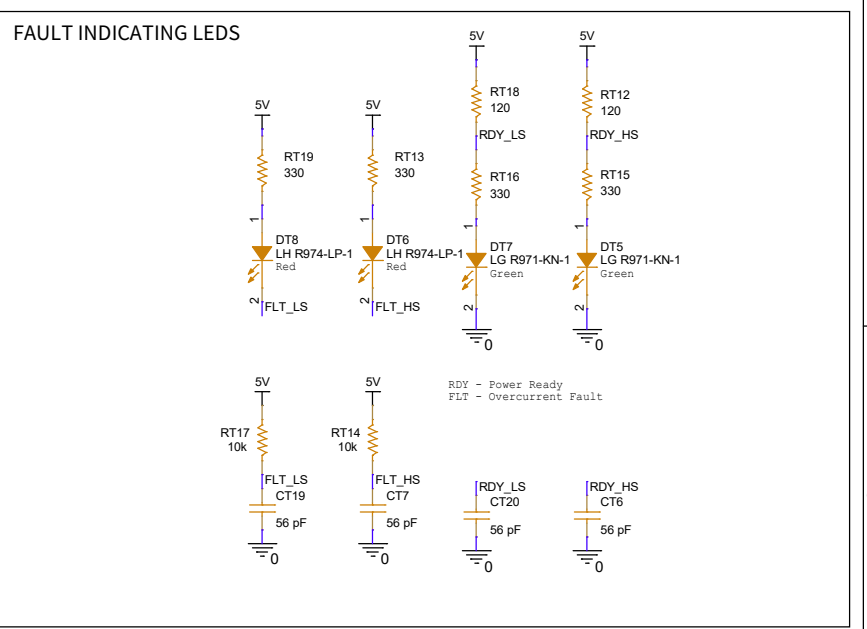
Title		
XM3 Gate Driver		
Size	Document Number	Rev
	Differential Signaling	2
Date:	Wednesday, January 31, 2024	Sheet 1 of 4



LOW SIDE DRIVER

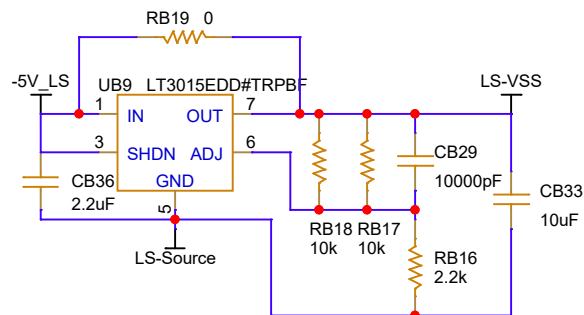
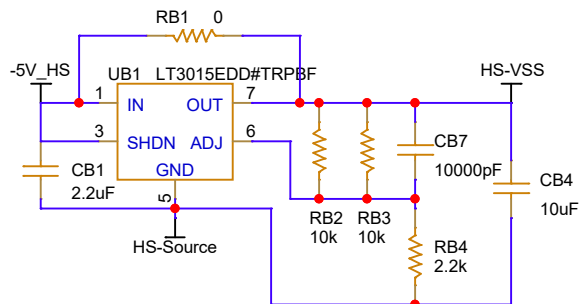


HIGH SIDE DRIVER

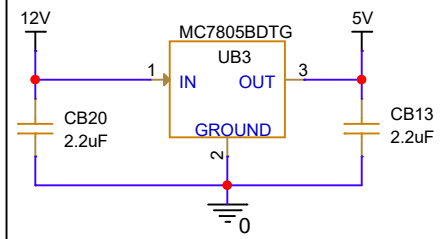


Title		
XM3 Gate Driver		
Size	Document Number	Rev
	Gate Driver	2
Date:	Wednesday, January 31, 2024	Sheet 2 of 4

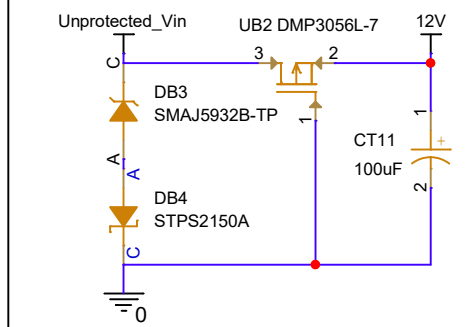
-4 V Negative Regulators



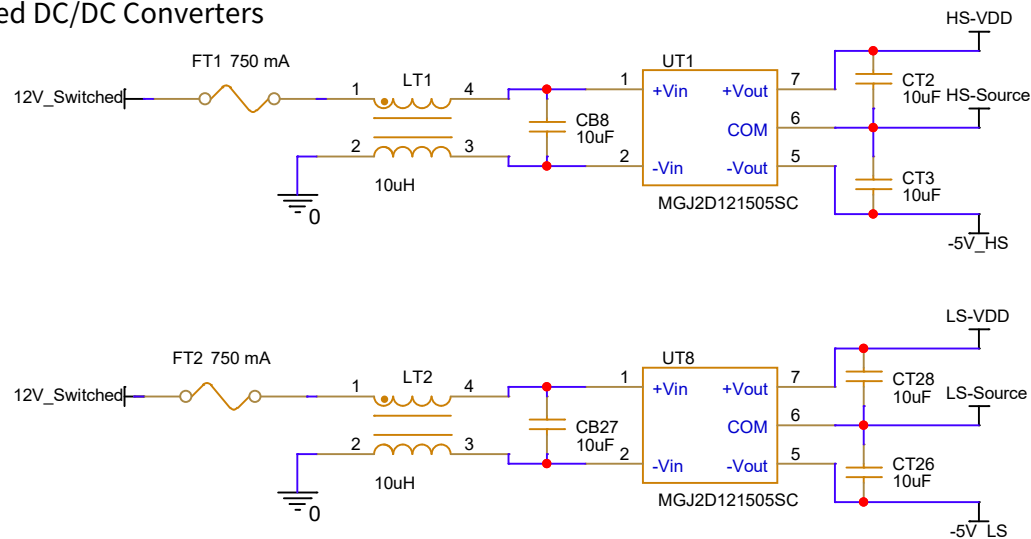
+5 V Primarily Regulator



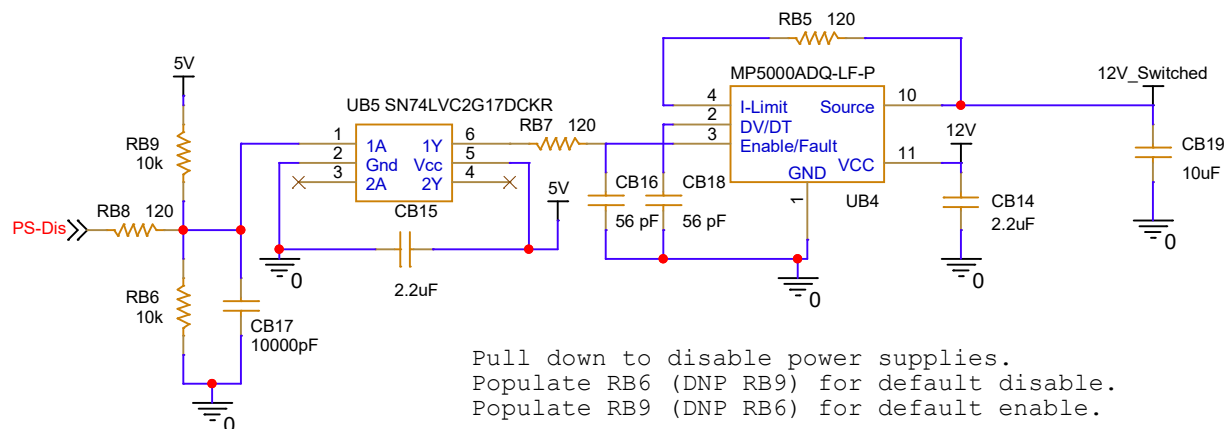
Input Protection



Isolated DC/DC Converters



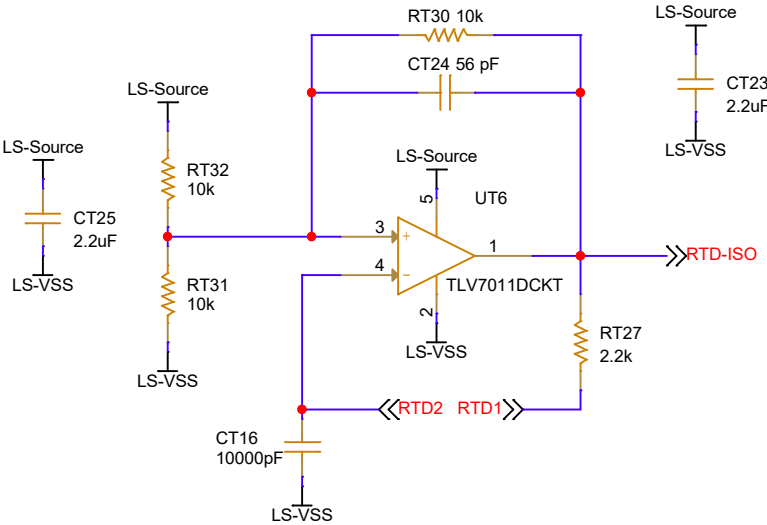
Power Supply Disable



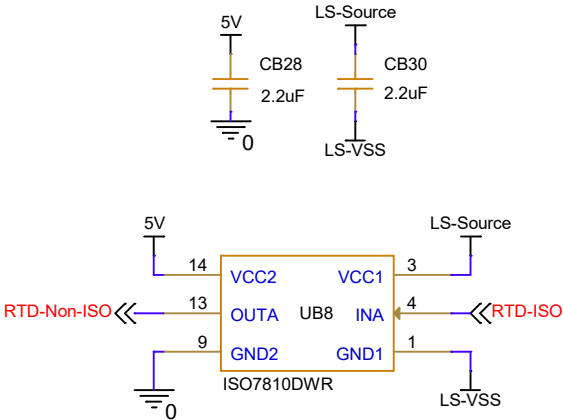
Wolfspeed

Title		
XM3 Gate Driver		
Size	Document Number	Rev
	Power Supplies	2
Date:	Wednesday, January 31, 2024	Sheet 3 of 4

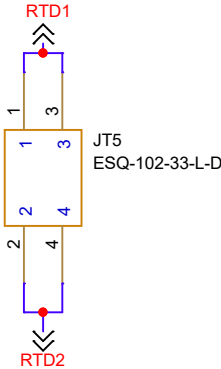
Resistance to Frequency Converter



Digital Isolator



RTD (NTC) Connector



0°C	= 13491	= 4.6 kHz
25°C	= 4700	= 10.3 kHz
50°C	= 1928	= 17.1 kHz
75°C	= 898	= 22.8 kHz
100°C	= 464	= 26.4 kHz
125°C	= 260	= 28.3 kHz
150°C	= 156	= 29.5 kHz
175°C	= 99	= 30.1 kHz



Title			XM3 Gate Driver	
Size	Document Number			Rev
	RTD			2
Date:	Wednesday, January 31, 2024			Sheet 4 of 4